



MEET DDL GROUP

COMMERCIAL, INDUSTRIAL, STRATA,
RESIDENTIAL

WELCOME TO OUR COMPANY

**THREE GENERATIONS OF EXCELLENCE IN
COATING SERVICES
COMMERCIAL, INDUSTRIAL, STRATA, AND
RESIDENTIAL SOLUTIONS ACROSS NSW**

**DDL GROUP IS A FAMILY-OWNED AND
OPERATED COATING COMPANY WITH ROOTS
FIRMLY PLANTED IN NEW SOUTH WALES.
WITH THREE GENERATIONS OF EXPERTISE
AND OVER 60 YEARS OF COMBINED
EXPERIENCE, WE BRING A WEALTH OF
KNOWLEDGE AND CRAFTSMANSHIP TO
EVERY PROJECT.**





VISION & MISSION

Vision

At DDL Group,
Our vision is to be the leading provider of high-quality painting solutions across industrial, commercial, strata, and residential sectors in New South Wales. We strive to set the industry standard for excellence, innovation, and reliability, delivering superior craftsmanship with every finish.

Mission

At DDL Group,
Our mission is to provide high-quality, durable, and professional painting solutions that enhance and protect industrial, commercial, strata, and residential properties across New South Wales. We are committed to delivering exceptional craftsmanship, superior customer service, and long-lasting results while maintaining the highest standards of safety and sustainability.

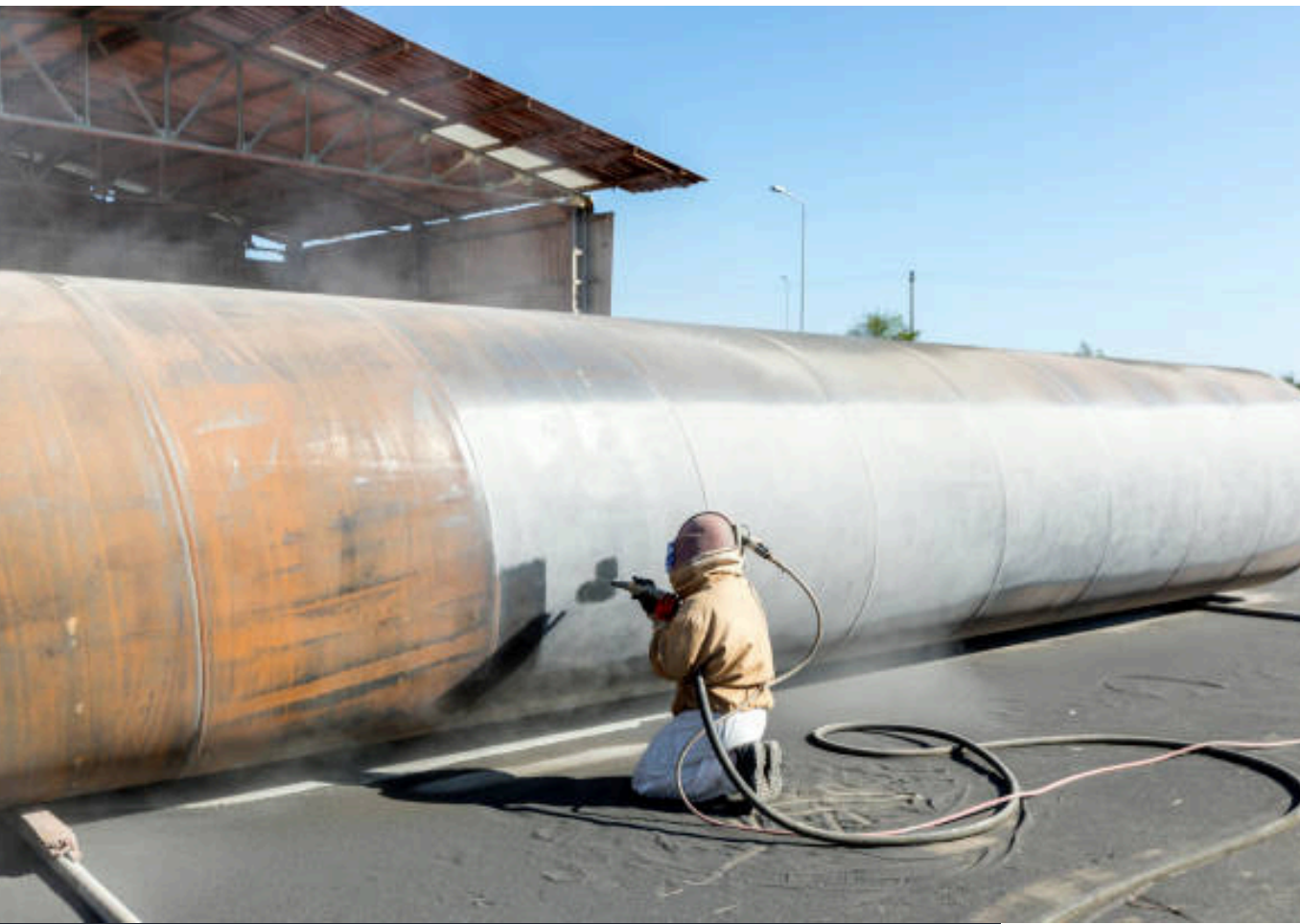


COMMERCIAL/ LARGE SCALE RESIDENTIAL

DDL Group is a trusted specialist in commercial painting projects, offering expert interior and exterior painting solutions. Our unwavering commitment to health and safety, coupled with our focus on creating long-term value for our clients, has made us the preferred painting service provider for some of the most prestigious and respected organizations in the region.

We take pride in offering a comprehensive range of commercial painting services tailored to meet the unique needs of various industries. Our expertise includes:

- Application of all conventional paint systems
- Texture coating and membrane application
- Graffiti removal and prevention
- Sustainable painting solutions
- Pressure washing and soft washing



INDUSTRIAL ABRASIVE BLASTING

DDL Group provides professional abrasive blasting services for the preparation, restoration and protection of steel, concrete and industrial assets. Our blasting solutions remove corrosion, coatings and contaminants, creating the ideal surface profile for high-performance coating systems and long-term durability.

Using industry-approved equipment and proven preparation methods, we deliver efficient surface preparation for projects ranging from structural steel and industrial facilities to heavy machinery, tanks and marine assets. Our expertise includes:

- Abrasive Blasting & Surface Preparation
- Structural Steel Blasting
- Rust & Corrosion Removal
- Industrial Plant & Equipment Restoration
- Tank, Silo & Pipework Preparation
- Concrete Surface Preparation
- Protective Coating Preparation
- Marine & Infrastructure Blasting



INDUSTRIAL PROTECTIVE COATINGS

DDL Group provides specialised industrial protective coating solutions designed to protect, preserve and extend the service life of industrial assets, structural steel and critical infrastructure. Combining abrasive blasting, surface preparation and high-performance coating systems, we deliver durable finishes that withstand corrosion, weathering, chemical exposure and harsh operating environments.

Our team has experience across industrial, commercial and infrastructure projects, delivering compliant coating solutions that enhance asset longevity, reduce maintenance requirements and provide long-term protection. Our expertise includes:

- Abrasive Blasting & Surface Preparation
- Protective Coatings & Corrosion Control
- Industrial Epoxy Coating Systems
- Mining Equipment & Heavy Plant Coatings
- Tank, Silo & Pipework Coatings
- Machinery & Asset Refurbishment





INDUSTRIAL & LOGISTICS FACILITIES

DDL Group provides complete painting and coating solutions for industrial and logistics developments across New South Wales. From large-scale distribution centres and tilt-panel warehouses to manufacturing facilities, factories and business parks, we deliver high-quality finishes that meet demanding project programmes and specifications.

Our team understands the unique requirements of industrial construction, including tilt-up concrete panels, structural steel, exposed services, warehouse interiors and external facade systems. Our expertise includes:

- Tilt-Up Concrete Panel Painting
- Warehouse & Distribution Centres
- Factory & Manufacturing Facilities
- Structural Steel & Machinery Painting
- Office & Amenities Fit-Outs
- Maintenance & Repainting Works
- Line Marking & Safety Coatings
- Protective Coating Systems



RESIDENTIAL

At DDL Group, we proudly offer a full suite of residential painting services, delivering high-quality finishes that enhance the beauty, value, and durability of your home. Whether you're renovating, building new, or simply refreshing your space, our experienced team works closely with homeowners to achieve exceptional results tailored to their vision and style.

We deliver premium, long-lasting finishes that elevate the comfort, aesthetic appeal, and value of your home, with services including:

- Interior Painting –
- Exterior Painting
- Feature Walls & Decorative Finishes
- Roof Painting
- Fence & Deck Painting/Staining
- Pre-Sale and Rental Property Refresh
- Colour Consultation



EPOXY

DDL Group specialises in high-performance epoxy coatings designed to provide durability, chemical resistance, and enhanced safety for industrial, commercial, and residential surfaces. Our epoxy solutions are ideal for warehouses, factories, garages, retail spaces, and high-traffic areas that require a tough, long-lasting finish.

Our Epoxy Coating Services:

- Industrial Epoxy Flooring
- Non-Slip & Safety Epoxy Coatings
- Epoxy Garage & Showroom Floors
- Decorative & Metallic Epoxy Finishes
- Chemical-Resistant Epoxy Coatings
- Epoxy Flake Systems
- Epoxy Line Marking & Zoning

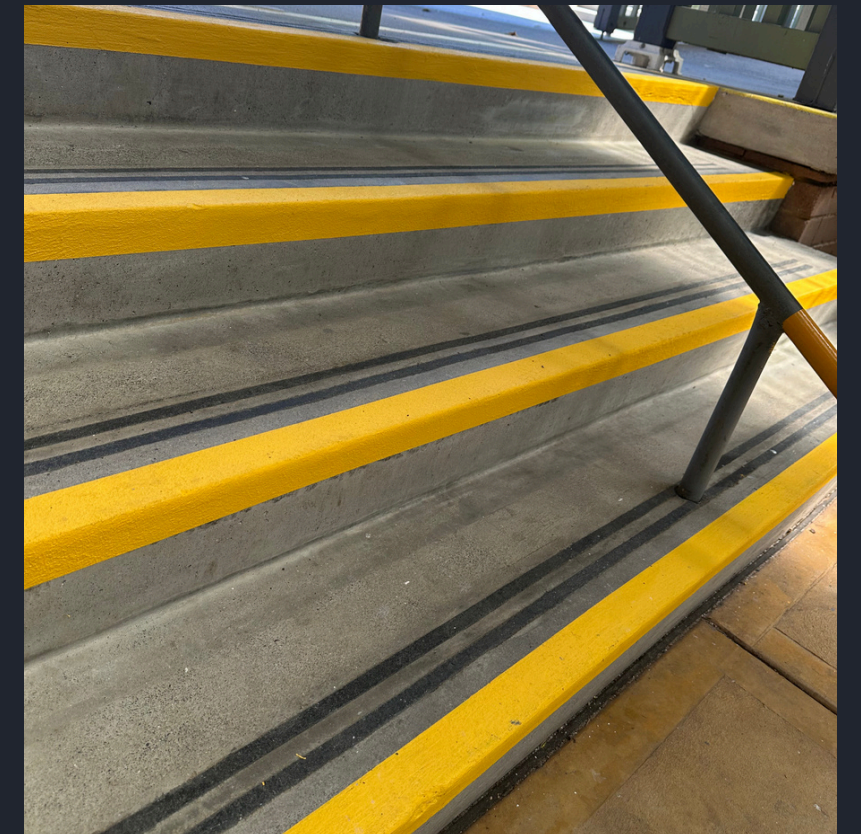


HIGH VISIBILITY SAFETY COATINGS

DDL Group specializes in high-visibility safety coatings designed to enhance workplace safety, improve visibility, and ensure compliance with industry regulations. Our coatings are ideal for industrial, commercial, and infrastructure environments where clear demarcation and hazard identification are critical.

Our High-Visibility Safety Coating Services:

- Safety Line Marking
- Hazard & Warning Zone Coatings
- Non-Slip Safety Coatings
- Reflective & Glow-in-the-Dark Coatings
- Heavy Machinery & Equipment Marking
- Road & Traffic Safety Coatings





MAINTENANCE

At DDL Group, we offer comprehensive maintenance solutions to preserve the durability, safety, and appearance of industrial, commercial, strata, and residential properties across New South Wales. Our proactive approach helps prevent costly repairs, extend surface longevity, and ensure compliance with safety standards.

Our Maintenance Services Include:

- Protective Coating Maintenance
- High-Visibility & Safety Marking Upkeep
- Structural Steel & Equipment Maintenance
- Facade & Exterior Repainting
- Graffiti Removal & Anti-Graffiti Coatings
- Epoxy & Floor Coating Maintenance
- Waterproofing & Weatherproofing
- Concrete Maintenance & Repair
- Render Repair & Maintenance
- Gyprock Repair & Maintenance



RENDERING

At DDL Group, we also offer a comprehensive range of professional rendering services designed to enhance the durability, aesthetics, and structural integrity of your property. Our expert team specializes in high-quality finishes tailored to suit various surfaces and environments.

Our rendering services include:

- Acrylic Rendering
- Cement Rendering
- Polished & Textured Finishes
- Protective & Decorative Coating
- Insulated Rendering Systems



With a strong commitment to quality craftsmanship and attention to detail, DDL Coatings ensures that every rendering project is completed to the highest standard. Whether for residential, commercial, or industrial applications, our solutions provide long-lasting durability and an impeccable finish.



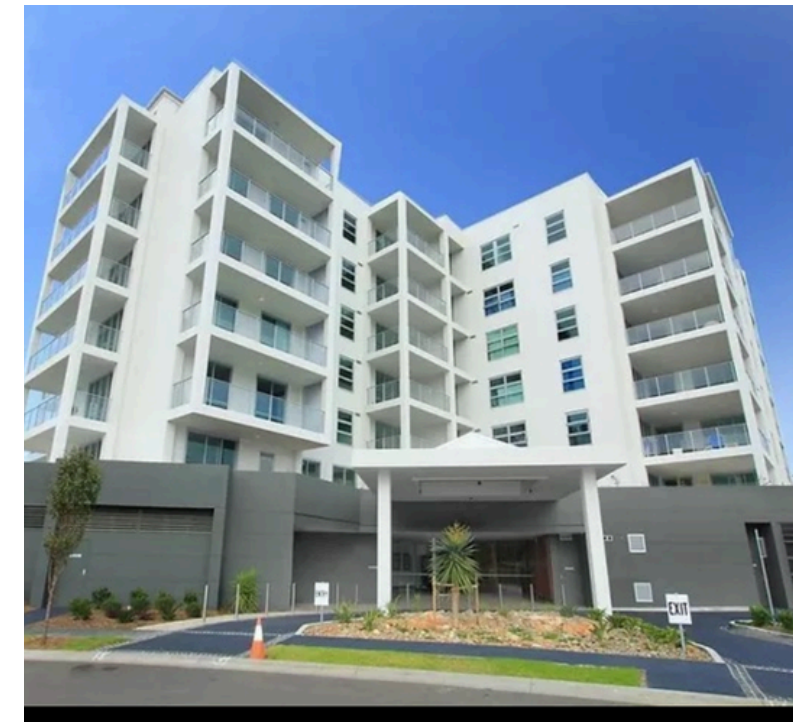
DDL
GROUP

CONTACT US

Phone : 0432-126-585

Website : www.ddlgroup.com.au

Email : admin@ddlgroup.com.au





DDL
GROUP

THANK YOU